
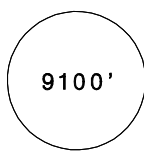
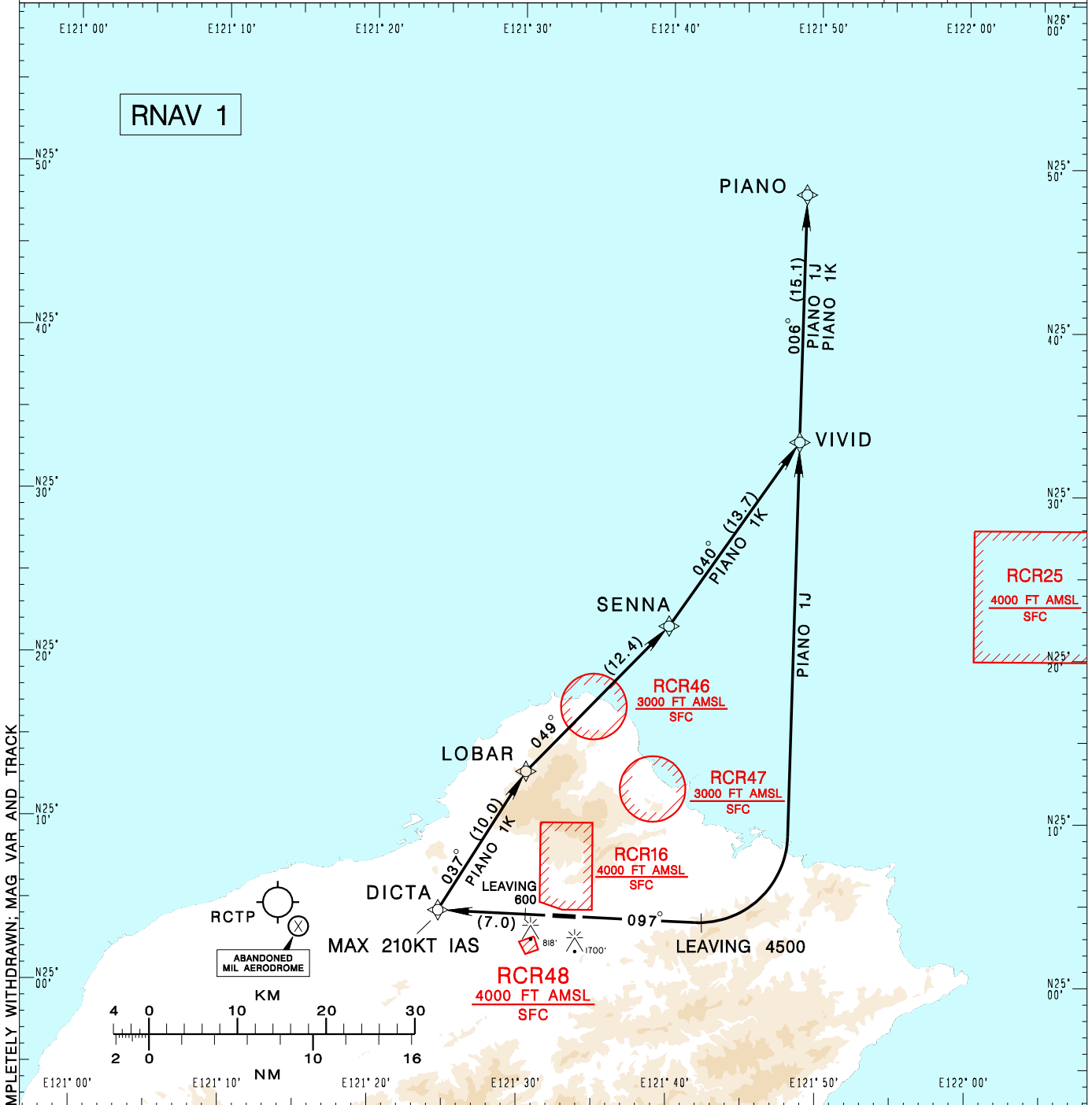


**臺北/松山機場**  
TAIPEI/SONGSHAN AD

**RCSS SID**  
PIANO 1J RNAV(RWY10)  
PIANO 1K RNAV(RWY28)

TAIPEI APP 119.7 119.6 125.1	SONGSHAN TWR 118.1	ATIS 127.4 341	 	
Apt Elev: 18'		Trans Level: FL130		Trans Alt: 11,000'
BEARINGS ARE MAGNETIC; DISTANCES ARE NAUTICAL MILES; ELEVATIONS, HEIGHTS IN FEET				



**PIANO ONE JULIETT RNAV DEPARTURE**  
Climb on HDG 097 until leaving 4500ft, then turn left direct to VIVID, then PIANO.

**PIANO ONE KILO RNAV DEPARTURE**  
Climb on RWY HDG until leaving 600ft, then direct to DICTA, then LOBAR, SENNA, VIVID, then PIANO.

- NOTE**
- 1.PIANO 1J: Minimum climb gradient required 7.4%(450ft/NM) until 4,000ft.
  - 2.PIANO 1K: Minimum climb gradient required 7.4%(450ft/NM) until LOBAR.
  - 3.Caution high terrain around airport.
  - 4.A 1700ft-high BLDG at 2.1NM south of THR 28.
  - 5.A 818ft-high BLDG at 2NM SW of THR 10.
  - 6.ATS surveillance required.
  - 7.Aircraft equipped with RNAV system not capable to excute the 120° turn at DICTA shall advice ATC in advance for alternate departure procedure.